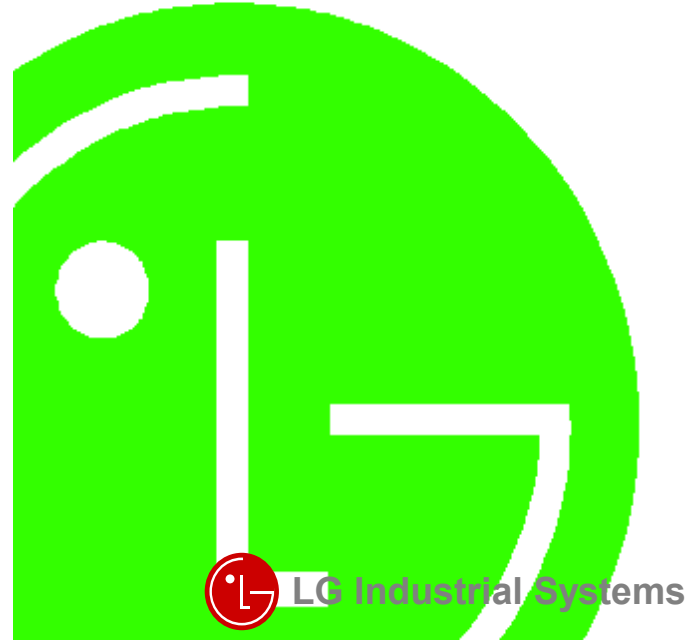


DATA SHEET

LG Programmable Logic Controller Analog to Digital Conversion Module MASTER-K K7F-AD3A K4F-AD3A



<p>Beijing Branch LG Industrial Systems Elevator Co., Ltd. T : +86-10-6462-3256 F : +86-10-6462-3255</p>	<p>Bangkok Branch LG Industrial Systems (Thailand) Co., Ltd. T : +66-2-381-8443 F : +66-2-381-8445</p>
<p>Bogota Branch LG Industrial Systems de Colombia S.A. T : +57-1-310-6077 F : +57-1-310-5831</p>	<p>Chicago Branch LG Industrial Systems Co., Ltd. Chicago Office T : +1-708-692-4500 F : +1-708-692-4501</p>
<p>Dalian Branch Dalian LG Industrial Systems Co., Ltd. T : +86-411-281-2579 F : +86-411-281-2578</p>	<p>Hanoi Branch LG Industrial Systems Co., Ltd. Hanoi Office T : +64-4-821-0388 F : +64-4-821-0399</p>
<p>Hong Kong Branch LG Industrial Systems (HK) Ltd. T : +852-2598-6615 F : +852-2598-7105</p>	<p>Shanghai Branch Shanghai LG Industrial Systems Co., Ltd. T : +86-21-6248-2710 F : +86-216248-3236</p>
<p>Singapore Branch LG Industrial Systems Co., Ltd. T : +65-323-7361 F : +65-323-7362</p>	<p>Taipei Branch LG Industrial Systems (Taiwan) Co. Ltd. T : +886-2-516-5010 F : +886-2-516-5035</p>
<p>Tokyo Branch LG Industrial Systems Co., Ltd. Tokyo Office T : +81-3-3589-6362 F : +81-3-3588-1810</p>	

LG Industrial Systems Co., Ltd.

● **Head Office**
LG Mullae Building 9th F, 10, Mullae-dong 6-ga, Yongsongpo-gu, Seoul, KOREA
Tel : +82-2-2006-3751~6 Fax : +82-2-2006-3951
Home page : <http://www.lgis.lg.co.kr/fa>

702006277

Before handling the product

Read this data sheet carefully prior to any operation, mounting, installation or start-up of the product.

Materials for MASTER-K

Name	Code
MASTER-K KGL-WIN (Programming Software)	702005036
MASTER-K (Instructions & programming)	702006539
MASTER-K CPU User's Manual	702006391
MASTER-K K7F-AD3A/K4F-AD3A/K3F-AD2A Manual	702006448

Name	Code
MASTER-K K7F-AD3A/K4F-AD3A Data Sheet	702006277

□ Safety Precautions

Be sure to read carefully the safety precautions given in data sheet and user's manual before operating the module and follow them. The precautions explained here only apply to the K7F-AD3A/K4F-AD3A. For safety precautions on the PLC system, see the MASTER-K CPU User's Manual.

A precaution is given with a hazard alert triangular symbol to call your attention, and precautions are represented as follows according to the degree of hazard.

WARNING If not provided with proper prevention, it can cause death, fatal injury or considerable loss of property.

CAUTION If not properly observed, it can cause a hazard situation to result in severe or slight injury or a loss of property.

However, a precaution followed with **CAUTION** can also result in serious conditions. Both of two symbols indicate that an important content is mentioned, therefore, be sure to observe it. Keep this manual handy for your quick reference in necessary.

□ Design Precautions

CAUTION
▶ Do not run I/O signal lines near to high voltage line or power line. Separate them as 100 mm or more as possible. Otherwise, noise can cause module malfunction.

□ Installation Precautions

CAUTION
▶ Operate the PLC in the environment conditions given in the general specifications.
▶ If operated in other environment not specified in the general specifications, it can cause an electric shock, a fire, malfunction or damage or degradation of the module.
▶ Make sure the module fixing projections is inserted into the module fixing hole and fixed.
▶ Improper installation of the module can cause malfunction, disorder or falling.

□ Wiring Precautions

CAUTION
▶ When grounding a FG terminal, be sure to provide class 3 grounding which is dedicated to the PLC.
▶ Before the PLC wiring, be sure to check the rated voltage and terminal arrangement for the module and observe them correctly.
If a different power, not of the rated voltage, is applied or wrong wiring is provided, it can cause a fire or disorder of the module.
▶ Drive the terminal screws firmly to the defined torque.
If loosely driven, it can cause short circuit, a fire or malfunction.
▶ Be careful that any foreign matter like wire scraps should not enter into the module. It can cause a fire, disorder or malfunction.

□ Test RUN and Maintenance Precautions

WARNING
▶ Do not contact the terminals while the power is applied. It can cause malfunction.
▶ When cleaning or driving a terminal screw, perform them after the power has been turned off.
▶ Do not perform works while the power is applied, which can cause disorder or malfunction.

CAUTION
▶ Do not separate the module from the printed circuit board(PCB), or do not remodel the module. They can cause disorder, malfunction, damage of the module or a fire.
When mounting or dismantling the module, perform them after the power has been turned off.
▶ Do not perform works while the power is applied, which can cause disorder or malfunction.

□ Waste Disposal Precautions

CAUTION
▶ When disposing the module, do it as an industrial waste.

1. Introduction

The K7F-AD3A/K4F-AD3A is analog/digital conversion module for use with the MASTER-K PLC K300S, K1000S series CPU module. The A/D conversion module is to convert an analog input signal (voltage or current) from external sensors into a 12-bit signed Binary digital value.

2. General Specifications

No	Item	Specifications	Standard		
1	Operating temperature	0 ~ 55 °C			
2	Storage temperature	-25 ~ 70 °C			
3	Operating Humidity	5 ~ 95%RH, non-condensing			
4	Storage humidity	5 ~ 95%RH, non-condensing			
5	Vibration	Occasional vibration		10 times in each direction for X, Y, Z IEC 1131-2	
		Frequency	Acceleration		Amplitude
		10 ≤ f ≤ 57 Hz	-		0.075 mm
		57 ≤ f ≤ 150 Hz	9.8m/s ² {1G}		-
		Continuous vibration			
Frequency	Acceleration	Amplitude			
10 ≤ f ≤ 57 Hz	-	0.035 mm			
57 ≤ f ≤ 150 Hz	4.9m/s ² {0.5G}	-			
6	Shocks	*Maximum shock acceleration: 147m/s ² {15G} *Duration time :11 ms *Pulse wave: half sine wave pulse(3 times in each of X, Y and Z directions)	IEC 1131-2		
7	Noise immunity	Square wave impulse noise	± 1,500 V	LGIS Standard	
		Electrostatic discharge	Voltage :4kV(contact discharge)	IEC 1131-2 IEC 801-2	
		Radiated electromagnetic field	27 ~ 500 MHz, 10 V/m	IEC 1131-2 IEC 801-3	
		Fast transient & burst noise	Severity Level Voltage	All power modules Digital I/Os (Ue ≥ 24 V) Analog I/Os communication I/Os 0.25 kV	IEC 1131-2 IEC 801-4
8	Atmosphere	Free from corrosive gases and excessive dust			
9	Altitude for use	Up to 2,000m			
10	Pollution degree	2 or lower			
11	Cooling method	Self-cooling			

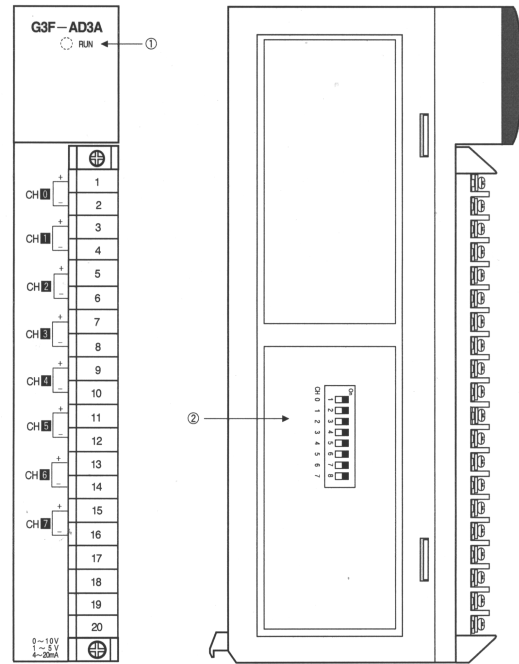
3. Performance Specifications

Items	Specifications	
	K7F-AD3A	K4F-AD3A
Input	Voltage	1 ~ 5 VDC (input resistance 1MΩ higher) 0 ~ 10VDC(input resistance 1MΩ higher)
	Current	DC 4 ~ 20 mA (input resistance 250Ω)
	Voltage/Current selection	*. Adjust input selection switch for each channel on side of module. (ON:Current, OFF:Voltage) *. Selection of voltage range by program.
Digital output	*. 12bit binary(-48 ~ 4047)	
Maximum resolution	1 ~ 5 VDC	1 mV (1/4000)
	0 ~ 10VDC	2.5mV(1/4000)
	DC 4 ~ 20 mA	4μA (1/4000)
Overall Accuracy(%)	± 0.5% or lower (accuracy to full scale)	
Maximum conversion speed (ms/channel)	5.0	
Maximum absolute input	Voltage(V):15, Current (mA):25	
Number of analog input point	8 channels/module	
Isolation	Between input terminals and PLC: Photo coupler isolation (Between channels : Non-isolated)	
Terminals connected	20-point terminal block	
Internal current consumption(A)	0.5A	
Weight (g)	310g	280 g

CAUTION
The adjusted value of A/D conversion module at manufacturer has been in the range of from 4 to 20 mA DC, and in accordance with it, offset / gain values is fixed.

This following shows the names of parts and functions of K7F-AD3A/K4F-AD3A module.

1) K7F-AD3A



2) K4F-AD3A

From unpacking to installation, be sure to check the following:

- 1) Do not drop it off, and make sure that strong impacts should not be applied.
- 2) Do not dismount printed circuit boards from the case. It can cause malfunctions.
- 3) During wiring, be sure to check any foreign matter like wire scraps should not enter into the upper side of the PLC, and in the event that foreign matter entered into it, always eliminate it.
- 4) Be sure to disconnect electrical power before mounting or dismounting the module.

6.1 Wiring Precaution

- 1) Separate AC and external input signal of A/D conversion module wiring not to be affected by surge or induced noise in the AC.
- 2) External wiring has to be at least AWG22(0.3 mm²) and be selected in consideration of operating ambience and/or allowable current.
- 3) Separate wiring from devices and/or substances generating intense heat, and oil not to make short-circuit which leads to damage and/or misoperation.
- 4) Identify the polarity of terminal block before external power supply is made connected.
- 5) Separate external wiring sufficiently from high voltage and power supply cable not to cause induced failure and/or malfunction.

6.2 Wiring example

- 1) Voltage Input

- 2) Current Input

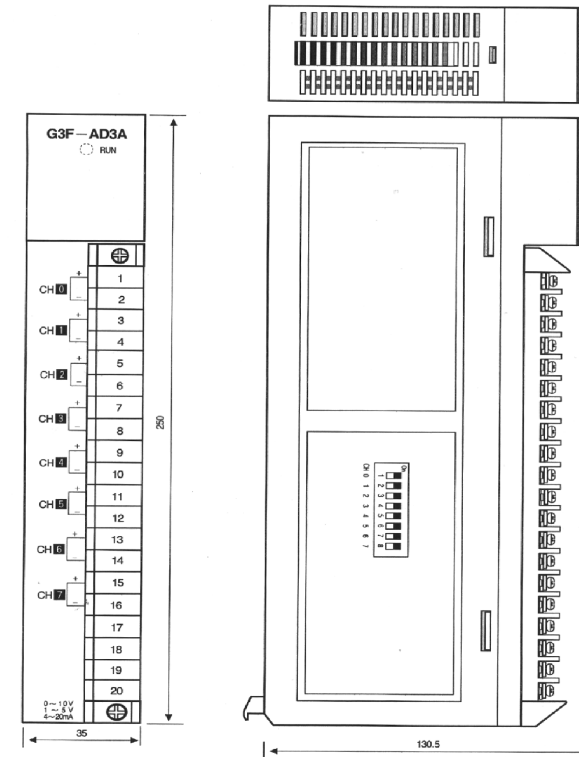
0	Description
①	<p>RUN LED</p> <p>Indicates the operating status of the K7F-AD3A/K4F-AD3A.</p>
②	<p>Selection Switch of Voltage/Current</p> <p>1)The swtich status at voltage selection</p> <p>2)The swtich status at current selection</p>

*1 For the cable, use a two-core twisted shielded wire.

*2 If noise is expected, this has to be grounded.

1) K7F-AD3A

(Unit : mm)



2)K4F-AD3A